

**2 PIECES STAINLESS STEEL BALL VALVES FLANGED PN 16
LONG PATTERN (DIN 3202-1 F1) PERFORMANCE RANGE**



Certificate 3.1

Size : DN 15 to 100 mm
Ends : PN16/40 R.F. Flanges
Min Temperature : - 20°C
Max Temperature : + 200°C
Max Pressure : 40 Bars up to DN50 (16 bars over)
Specifications : ISO 5211 mounting pad
PTFE seat
Anti blow-out stem
Atex
Fire safe according to API607

Materials : Stainless steel EN 1.4408

**2 PIECES STAINLESS STEEL BALL VALVES FLANGED PN 16
LONG PATTERN (DIN 3202-1 F1) PERFORMANCE RANGE**

SPECIFICATIONS :

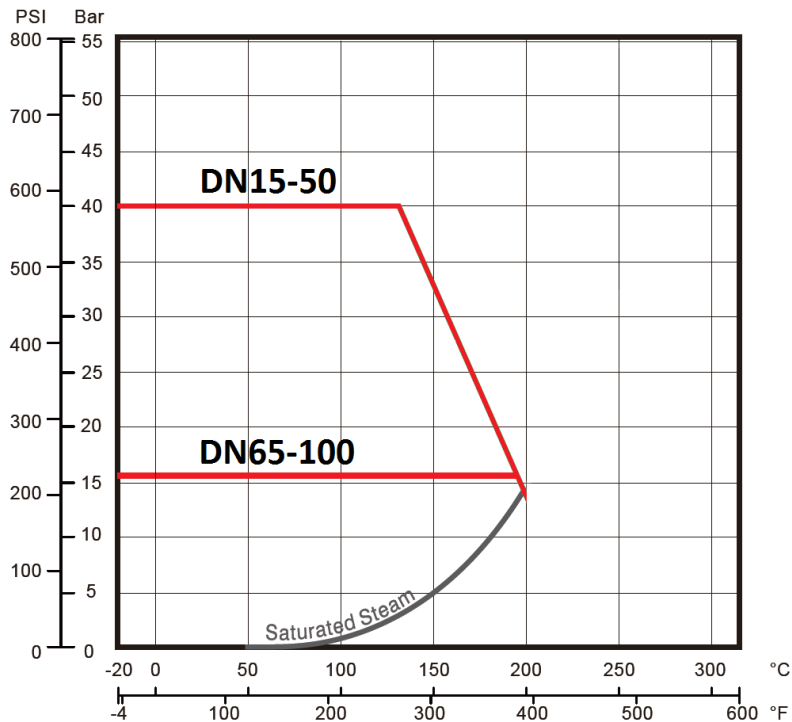
- Full bore
- Anti blow-out stem
- Double antistatic device
- PTFE seat
- Locking device
- ISO 5211 mounting pad
- 2 pieces type (Split body)
- With exhaust hole in the ball (located in the top of the ball to avoid overpressure in it)

USE :

- Chemical industries, petrochemical industries, hydraulic installation, compressed air, heating and water distribution
- Steam : 11 bars maximum
- Min and max Temperatures Ts : -20°C to + 200°C
- Max Pressure Ps : 40 bars up to DN50, 16 bars over (see graph under)

PRESSURE / TEMPERATURE GRAPH (STEAM EXCLUDED) :

PRESSURE



Temperature

RANGE :

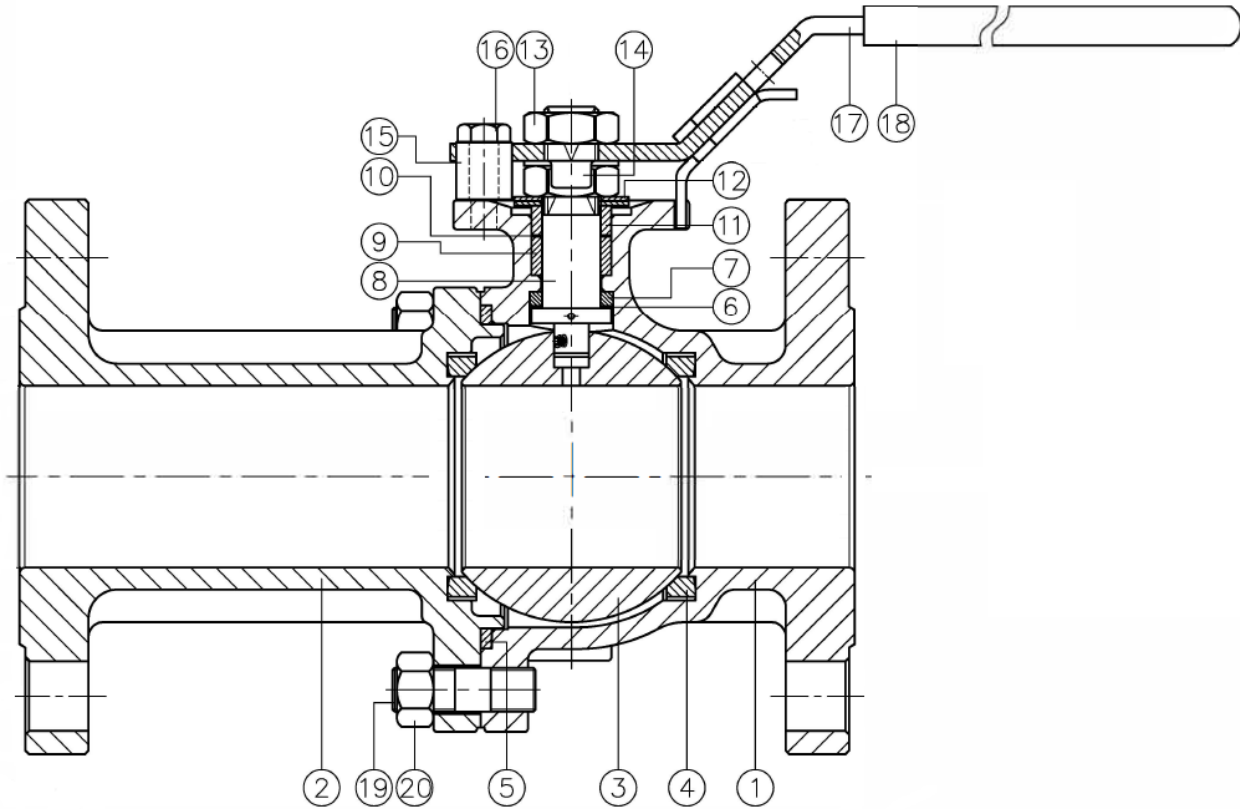
- Stainless steel body ball valve DIN F1 flanged PN16 Ref. 763L from DN 15 to DN 100

ENDS :

- R.F. Flanged PN40 up to DN50, PN16 over

**2 PIECES STAINLESS STEEL BALL VALVES FLANGED PN 16
LONG PATTERN (DIN 3202-1 F1) PERFORMANCE RANGE**

MATERIALS DN 15 - 50 :

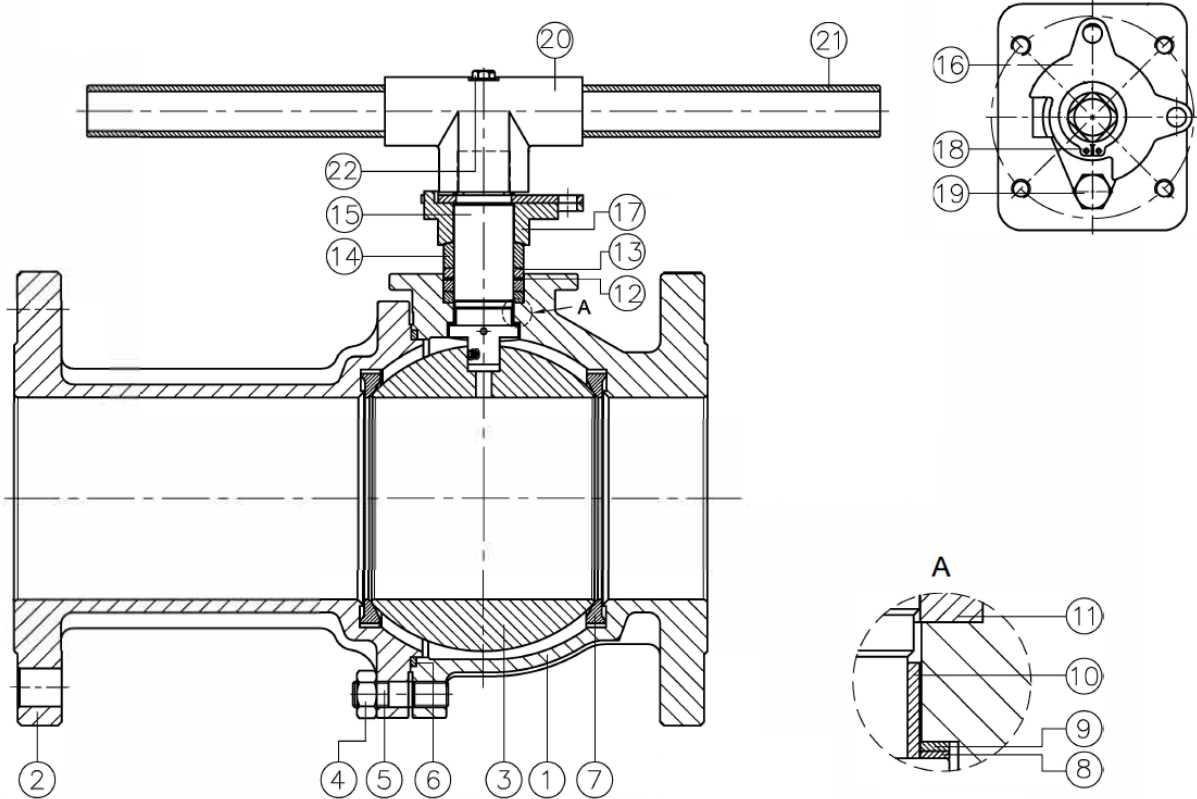


(* : included in gaskets kit)

Item	Designation	Materials
1	Body	EN 1.4408
2	Ends	
3	Ball	
4*	Seat	PTFE
5*	Body seal	Graphite
6*	Ring	PTFE filled with 25% carbon
7*	Ring	
8	Stem	ASTM A276-316
9*	Packing	Graphite
10*	Packing	PTFE filled with 25% carbon
11	Packing gland	AISI 304
12	Elastic ring	AISI 301
13	Nut	AISI 304
14	Washer	
15	Pin	
16	Pin screw	
17	Handle	PVC
18	Handle cover	
19	Stud	ASI 304
20	Nut	

**2 PIECES STAINLESS STEEL BALL VALVES FLANGED PN 16
LONG PATTERN (DIN 3202-1 F1) PERFORMANCE RANGE**

MATERIALS DN 65 - 100 :



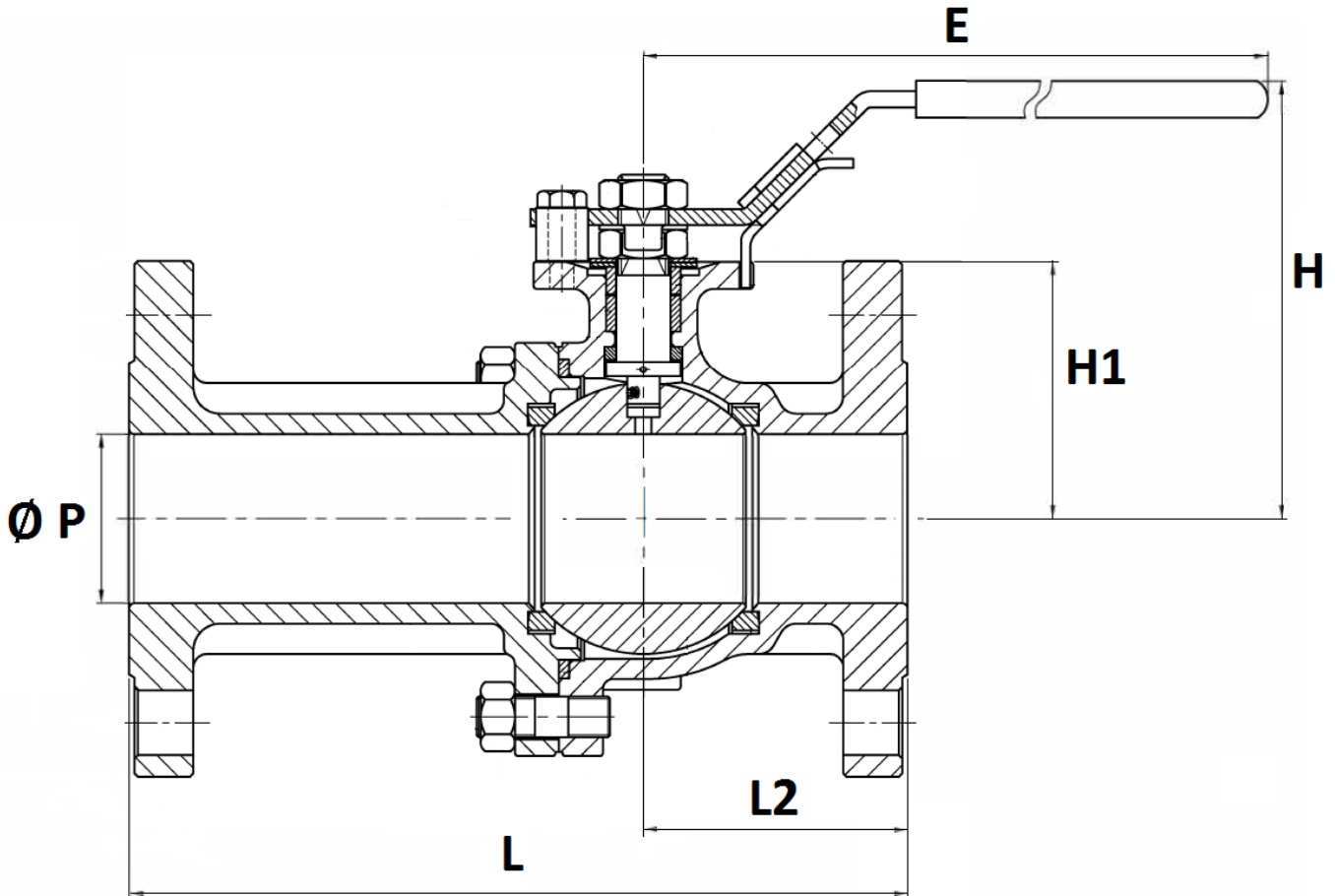
Item	Designation	Materials
1	Body	EN 1.4408
2	Ends	
3	Ball	
4	Nut	AISI 304
5	Stud	
6*	Body seal	Graphite
7*	Seat	PTFE
8*	Ring	PTFE filled with 25% carbon
9*	Ring	
10*	Ring	
11*	Packing	Graphite
12*	Packing	PTFE filled with 25% carbon
13	Ring	AISI 304
14	Ring	
15	Stem	AISI 316
16	Pin	AISI 304
17	Packing gland	1.4308
18	Circlip	AISI 304
19	Screw	
20	Handle adaptor	1.4308
21	Handle	AISI 304
22	Screw	

(* : included in gaskets kit)

**2 PIECES STAINLESS STEEL BALL VALVES FLANGED PN 16
LONG PATTERN (DIN 3202-1 F1) PERFORMANCE RANGE**

SIZE DN 15 - 50 (in mm) :

DN 15 - 50

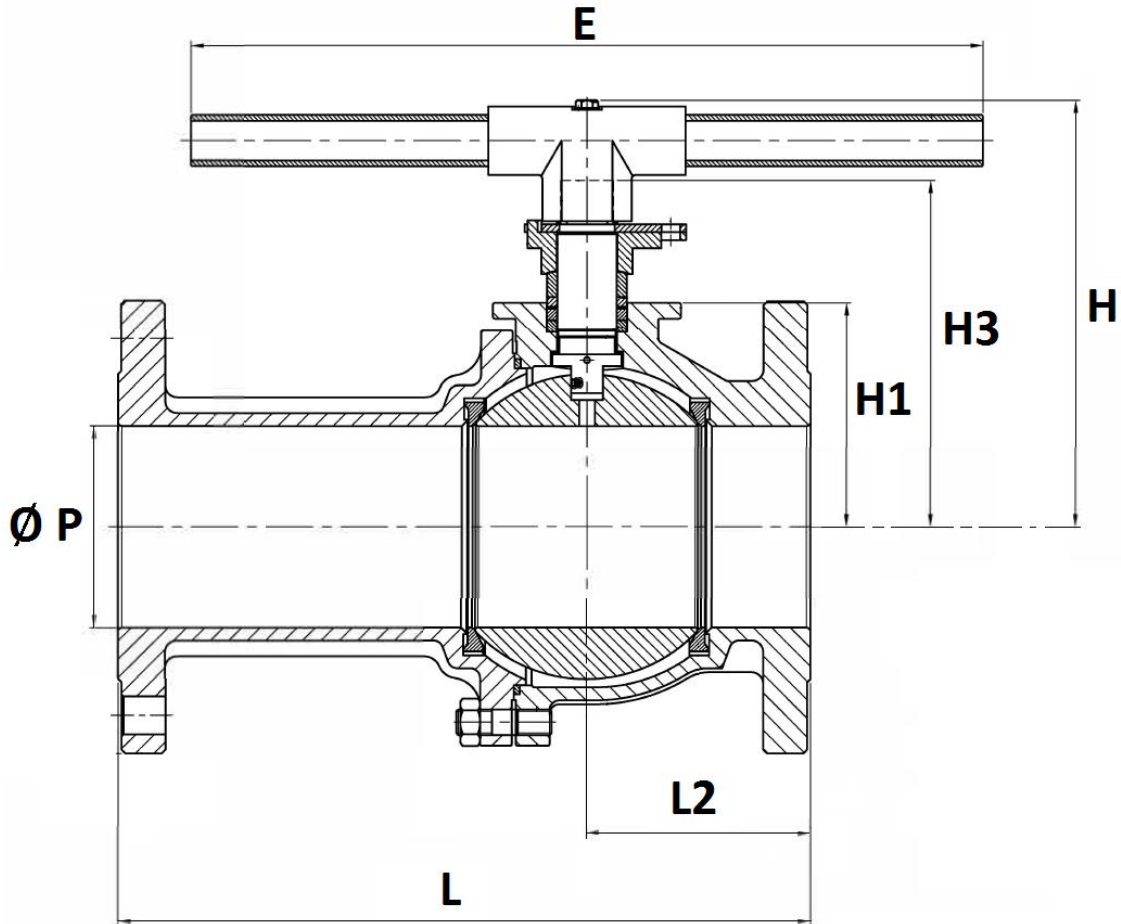


Ref.	DN	15	20	25	32	40	50
763L	Ø P	15	20	24	30	38	50
	L	130	150	160	180	200	230
	L2	50.5	53.5	54.5	57	60	65.5
	E	158	158	196	196	245	261
	H	76.6	79.1	92	96	121.1	127.6
	H1	39	42.5	52	56	66	73
	Weight (Kg)	2.3	3.1	4.3	5.9	7.5	10.3

**2 PIECES STAINLESS STEEL BALL VALVES FLANGED PN 16
LONG PATTERN (DIN 3202-1 F1) PERFORMANCE RANGE**

SIZE DN 65 - 100 (in mm) :

DN 65 - 100

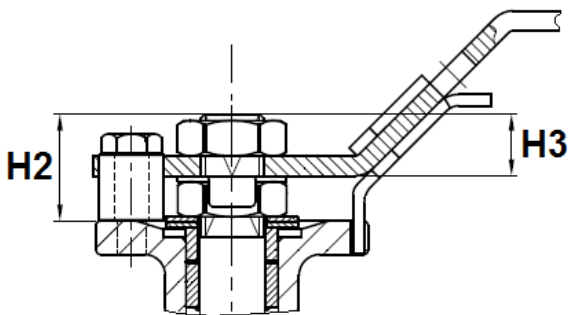


Ref.	DN	65	80	100
763L	Ø P	64	76	98
	L	290	310	350
	L2	77.5	77.5	85.2
	E	400	400	400
	H	188	194	215
	H1	86.5	91.5	113.5
	H3	152	158	179
	Weight (in Kg)	16.3	20	28.1

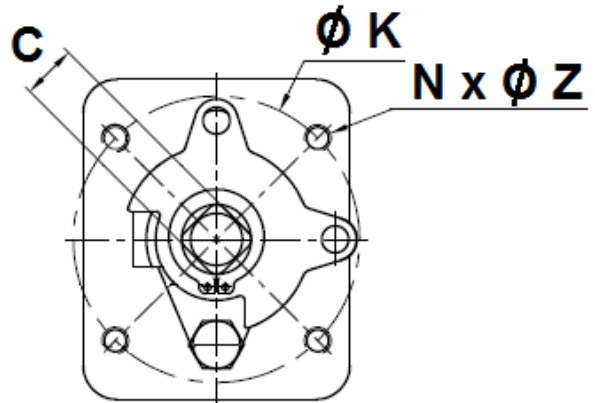
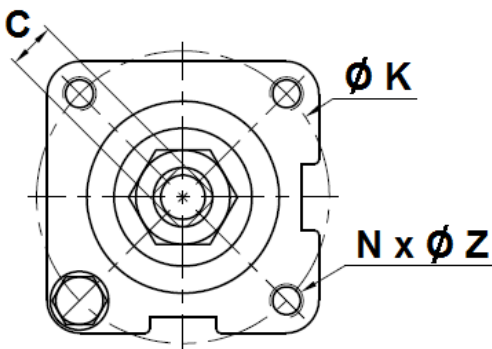
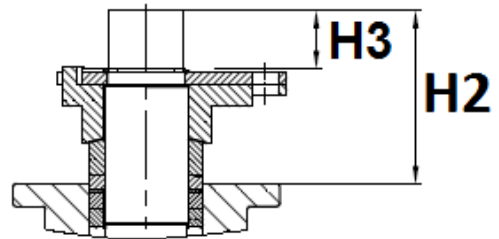
**2 PIECES STAINLESS STEEL BALL VALVES FLANGED PN 16
LONG PATTERN (DIN 3202-1 F1) PERFORMANCE RANGE**

ISO MOUNTING PAD AND STEM SIZE (in mm) :

DN 15 – 50



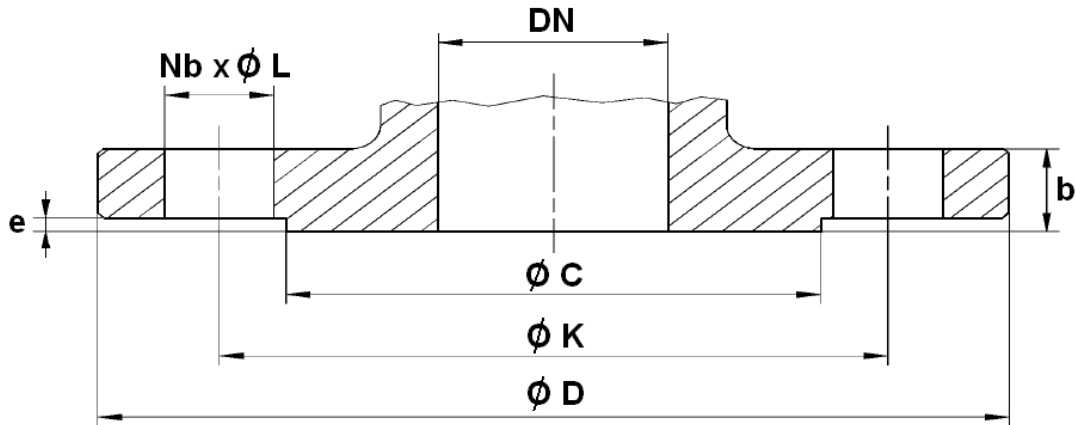
DN 65 – 100



DN	15	20	25	32	40	50	65	80	100
C	9	9	11	11	14	14	17	17	17
Ø K	42	42	50	50	70	70	102	102	102
ISO	F04	F04	F05	F05	F07	F07	F10	F10	F10
N x Ø Z	4xM5	4xM5	4xM6	4xM6	4xM8	4xM8	4 x M10x1.5		
H2	14.5	14	18	17	22	21.5	65.5	66.5	65.5
H3	8.5	8.5	12	12	14	14	27	27	27

**2 PIECES STAINLESS STEEL BALL VALVES FLANGED PN 16
LONG PATTERN (DIN 3202-1 F1) PERFORMANCE RANGE**

FLANGES SIZE (in mm) :



DN	15	20	25	32	40	50	65	80	100
Ø C	45	58	68	78	88	102	122	138	158
Ø D	95	105	115	140	150	165	185	200	220
Ø K	65	75	85	100	110	125	145	160	180
Nb x Ø L	4 x 14	4 x 14	4 x 14	4 x 18	4 x 18	4 x 18	4 x 18	8 x 18	8 x 18
b	16	18	18	18	18	20	18	20	20
e	2	2	2	2	3	3	3	3	3

**2 PIECES STAINLESS STEEL BALL VALVES FLANGED PN 16
 LONG PATTERN (DIN 3202-1 F1) PERFORMANCE RANGE**

FLOW COEFFICIENT Kvs (M3 / h) :

DN	15	20	25	32	40	50	65	80	100
Kvs (m3/h)	31	58	86	139	228	415	698	958	1684

TORQUE VALUES (in Nm without safety coefficient) :

DN	15	20	25	32	40	50	65	80	100
Torque (Nm)	8	10	12	20	30	40	60	90	130

STANDARDS :

- Fabrication according to ISO 9001 : 2015
- DIRECTIVE 2014/68/EU : CE N° 0035
Risk Category III Module H
- Certificate 3.1 on request
- Construction according to EN 12516-1
- Pressure tests according to EN 12266-1, Rate A
- PN16/40 R.F. flanges according to EN 1092-1
- ISO 5211 mounting pad
- Length according to EN 558 series 1 (NF 29355, DIN 3202-1 F1)
- ATEX Group II Category 2 G/2D Zone 1 & 21 Zone 2 & 22 (optional marking)
- Fire safe according to API 607 6th Edition 2010

**2 PIECES STAINLESS STEEL BALL VALVES FLANGED PN 16
LONG PATTERN (DIN 3202-1 F1) PERFORMANCE RANGE**

INSTALLATION INSTRUCTIONS

GENERAL GUIDELINES :

- Ensure that the valves to be used are appropriate for the conditions of the installation (type of fluid, pressure and temperature).
- Be sure to have enough valves to be able to isolate the sections of piping as well as the appropriate equipment for maintenance and repair.
- Ensure that the valves to be installed are of correct strength to be able to support the capacity of their usage.
- **Installation of all circuits should ensure that their function can be automatically tested on a regular basis (at least two times a year).**

INSTALLATION INSTRUCTIONS :

- **Before installing the valves, clean and remove any objects from the pipes** (in particular bits of sealing and metal) which could obstruct and block the valves.
- **Ensure that both connecting pipes either side of the valve (upstream and downstream) are aligned (if they're not, the valves may not work correctly).**
- **Make sure that the two sections of the pipe (upstream and downstream) match, the valve unit will not absorb any gaps. Any distortions in the pipes may affect the tightness of the connection, the working of the valve and can even cause a rupture.** To be sure, place the kit in position to ensure the assembling will work.
- **If sections of piping do not have their final support in place, they should be temporarily fixed. This is to avoid unnecessary strain on the valve.**
- Tighten the bolts in cross.
- It's recommended to operate the valve (open and close) 1 to 2 times per year
- **For an installation in ATEX area, check the conductivity between the valve, the upstream pipe and the downstream pipe and make sure the pipe is connected to the earth.**

